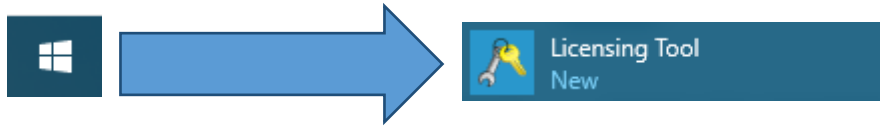


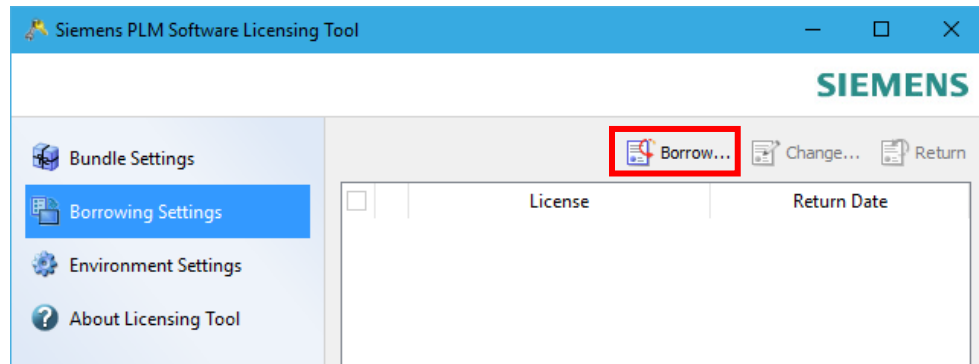
License Borrowing Guide for “NX”

NX will only work on-campus unless you borrow a license for off-campus use. To borrow a license please follow the below steps.

Step 1: Open the **Start Menu** and locate **Licensing Tool** under **Siemens NX 10.0**.

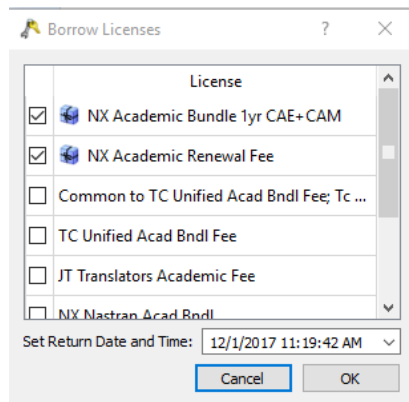


Step 2: Under the **Borrowing Settings** tab, click **Borrow...**

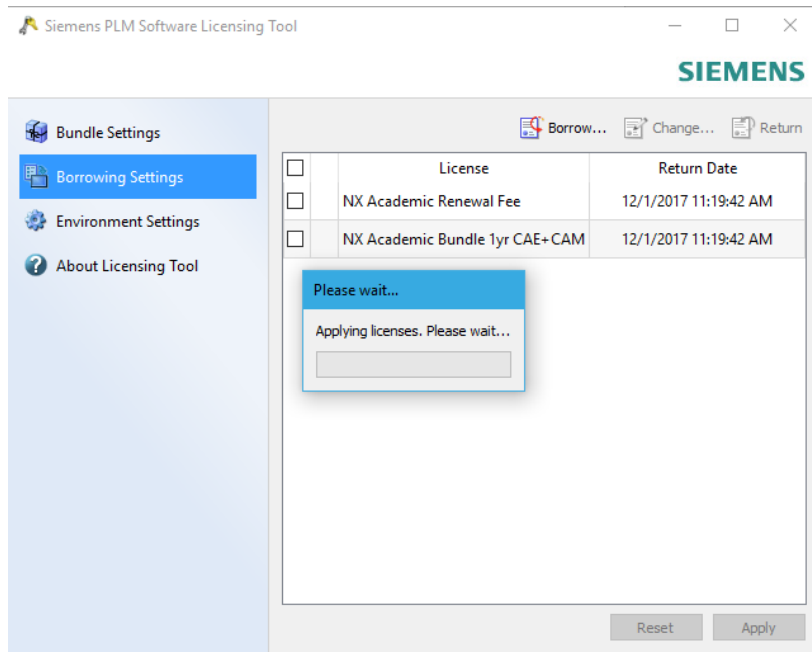
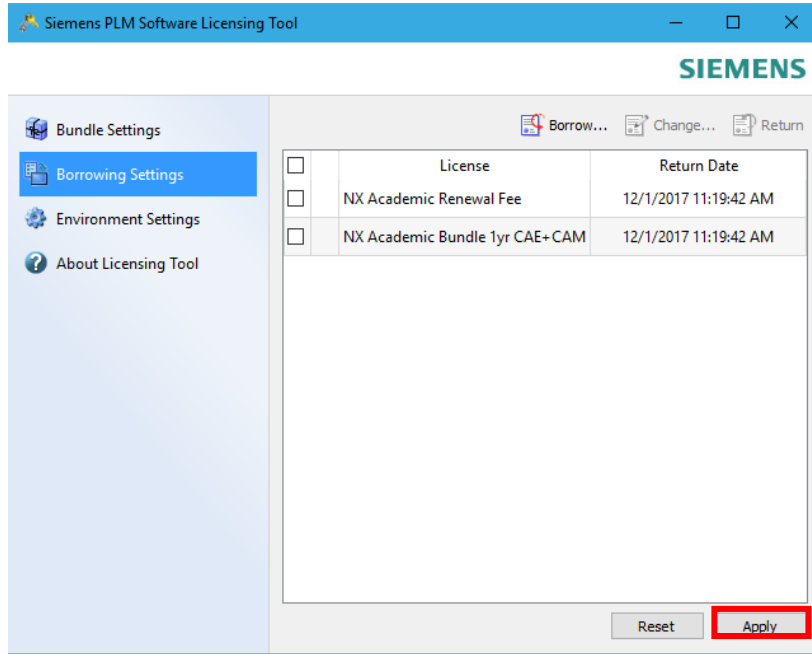


Step 3: Check off both the **NX Academic Bundle 1yr CAE+CAM** and the **NX Academic Renewal Fee** license and fill in the length of time you want to borrow the license for. Then click **OK**.

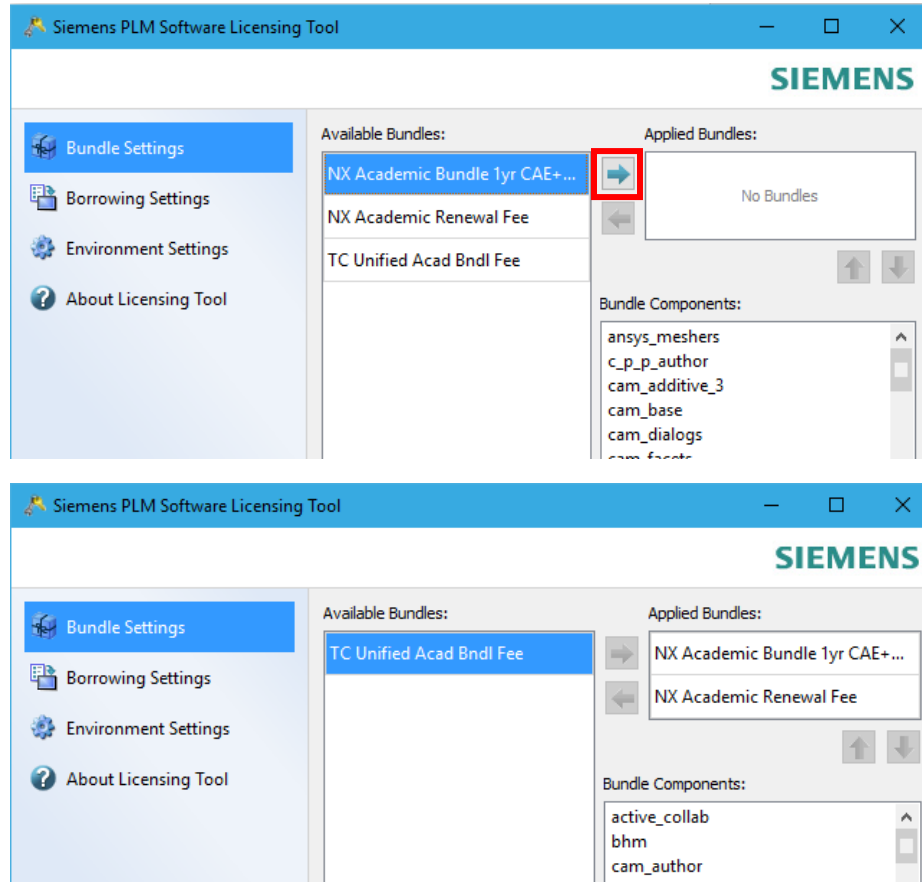
Note: Licenses are limited to a **90-day** maximum borrow period. You can re-borrow the license for an additional 90 days by returning to campus and repeating these steps.



Step 4: Click **Apply** to borrow the licenses. Note that it make take a few minutes for this process to finish.



Step 5: Under the **Bundle Settings** tab select both the **NX Academic Bundle 1yr CAE+CAM** and **NX Academic Renewal Fee** bundles and click the arrow to move the bundles to the **Applied Bundle** section.



Step 6: License borrowing complete. You should now be able to use NX while off-campus for the duration of the borrowed license period.